

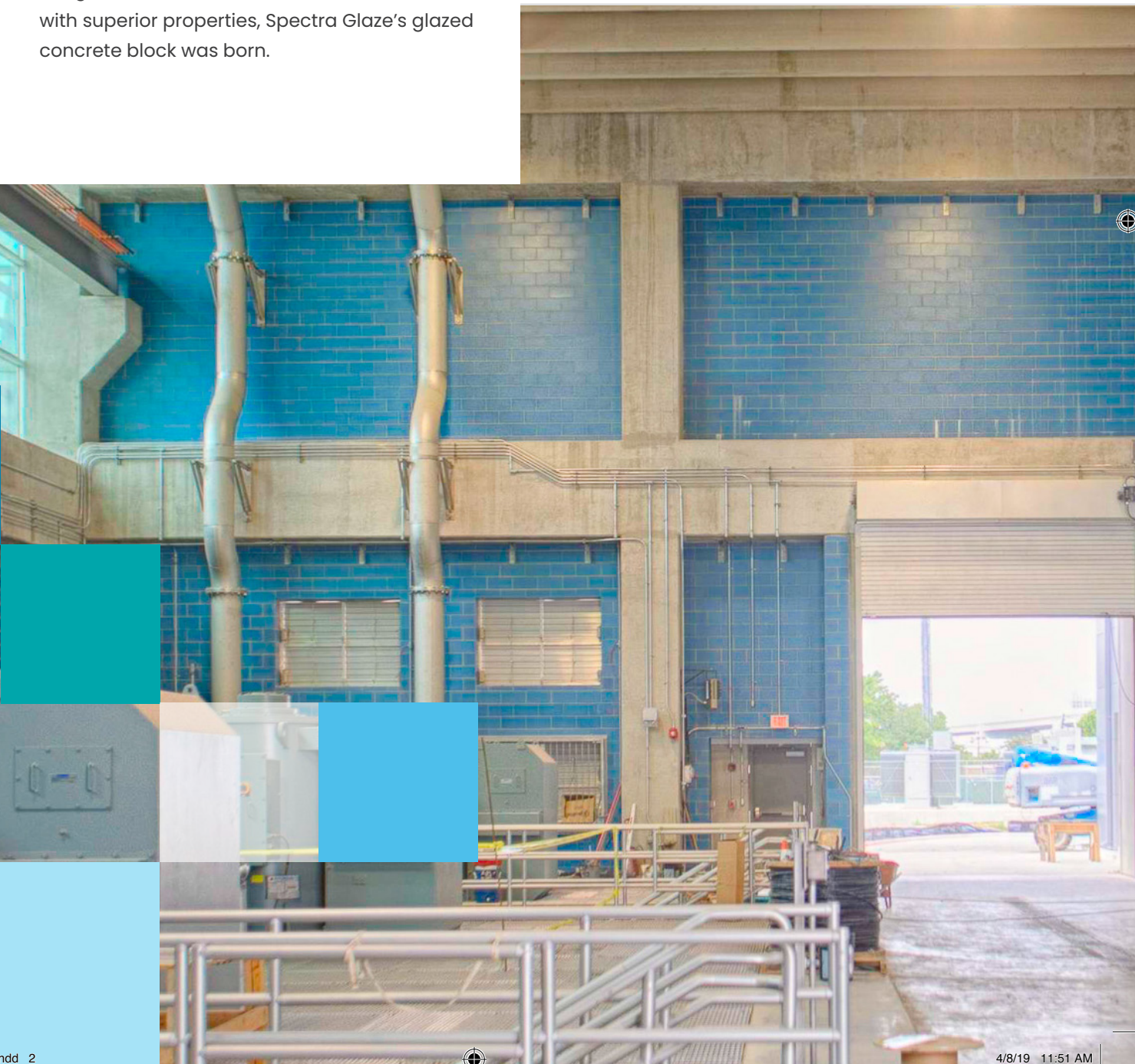
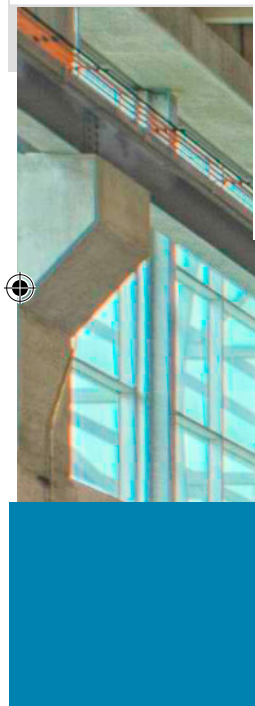


**Spectra**  
**GLAZE®**  
A member of the Hi-Standard Family of Companies



## Spectra GLAZE™

In 1790, Spectra Glaze started in Baltimore, Maryland, by the Burns & Russell Co. but is now a part of the Hi-Standard family brand. In the beginning, they started out manufacturing clay brick and pavers and selling them in and around the city of Baltimore. Eventually, the company gravitated out of making clay brick as their local access to clay dried up. In the early 1950's, the Russell family expanded operations to include coatings, basic chemical research, additives, minerals, pigments, ceramic coatings for metal, and new polymer compounds. With the unique discovery of how to combine organic and inorganic molecules to form new substances, with superior properties, Spectra Glaze's glazed concrete block was born.





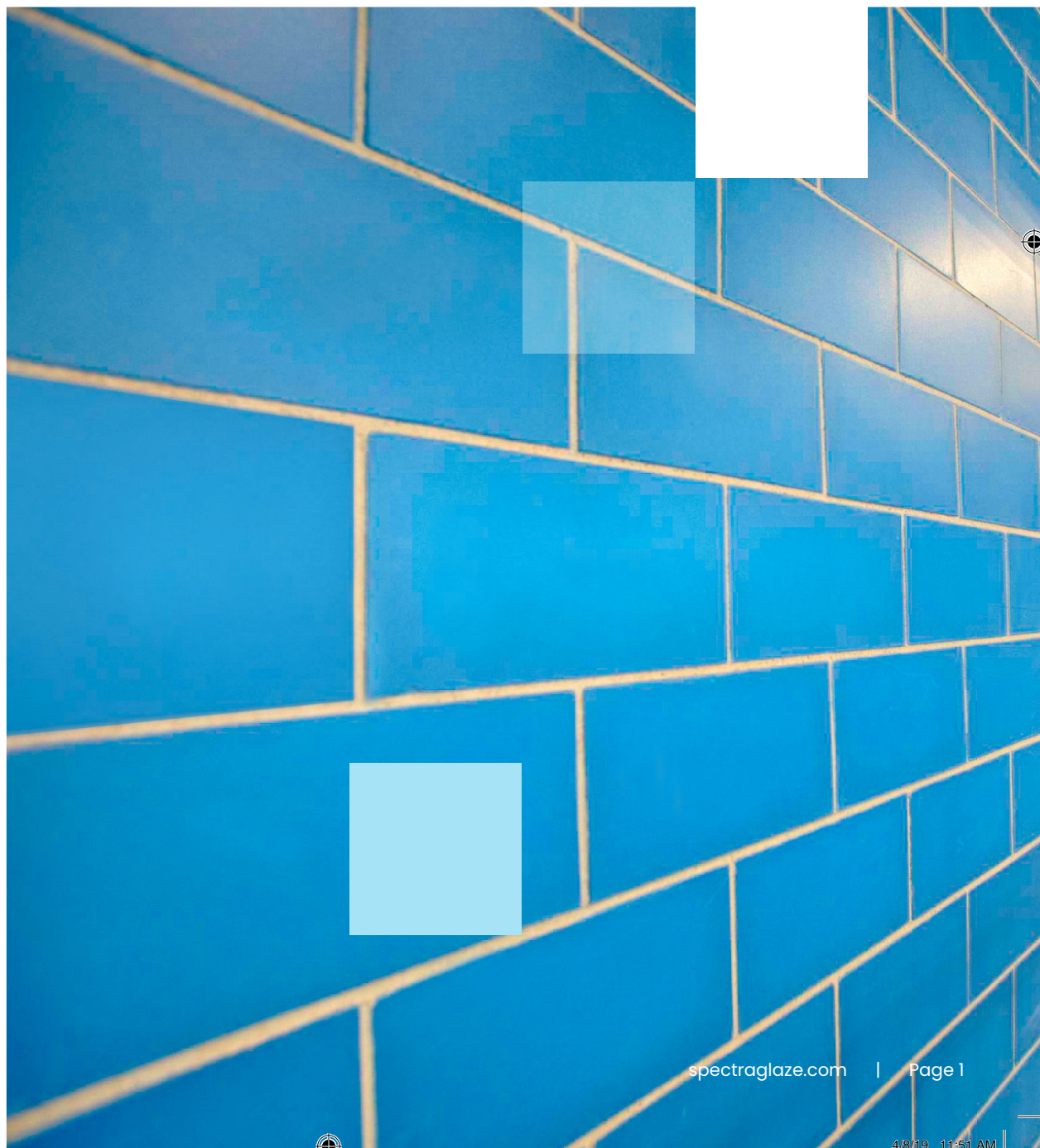


## Why Spectra GLAZE® Units?

Enjoy design opportunities with a wide choice of color, texture, scale and pattern. Spectra GLAZE® units provide superior resistance to soiling, chemicals, marking, impact, abrasion, urine, blood and acid rain. They conform to ASTM C-744 and meet or exceed ASTM C-90 standards. Not only are they fire safe, non-toxic and meet all national building codes, they meet the USDA and OSHA requirements for sanitary walls.

This excellent wall material provides the durable fire resistance, insulation, sound control and all other advantages of concrete masonry. With Spectra GLAZE® units, you build and finish a wall with one unit, in one labor operation, saving time and money.

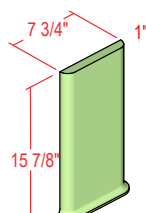
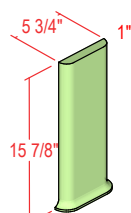
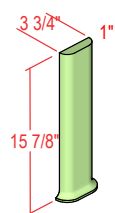
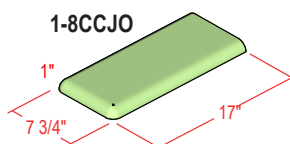
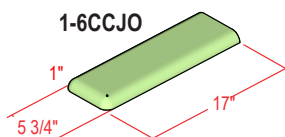
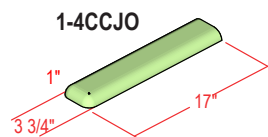
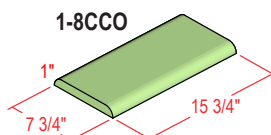
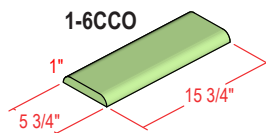
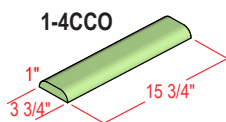
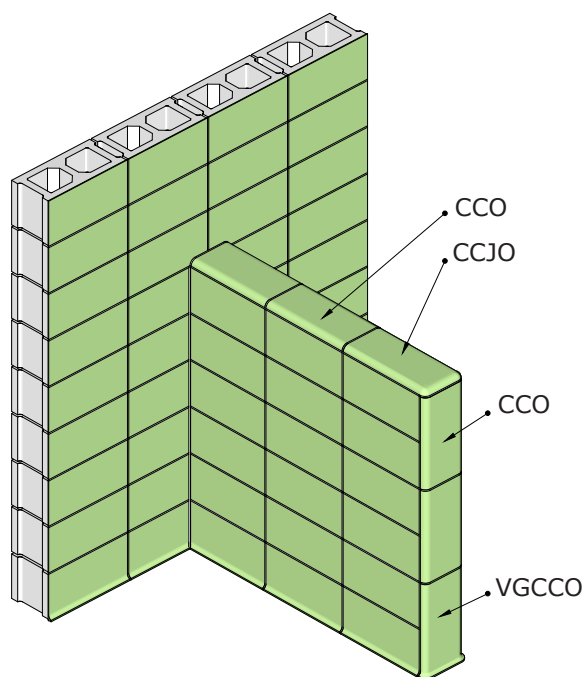
Spectra GLAZE® units have been satisfying design needs in all kinds of buildings for more than four decades.





## Trym-Saver Series™

Patented Trym-Saver Closure Series is formed from the same composition as the glazed face on full size block. Contact your local representative for availability, precise sizes and backing.



1-4VGCCO

1-6VGCCO

1-8VGCCO

## Design Flexibility

- Full spectrum of satin finish colors.
- Scored units offer many choices of scale and pattern.
- Unique reflective, ever-changing patterns.
- Sculptured faces for additional creative opportunities.
- Close tolerances allow dimensional precision, especially for stack bond.
- Flat ends permit soldier coursing.
- A wide variety of shapes and thicknesses.
- Modular for simplified design and construction.





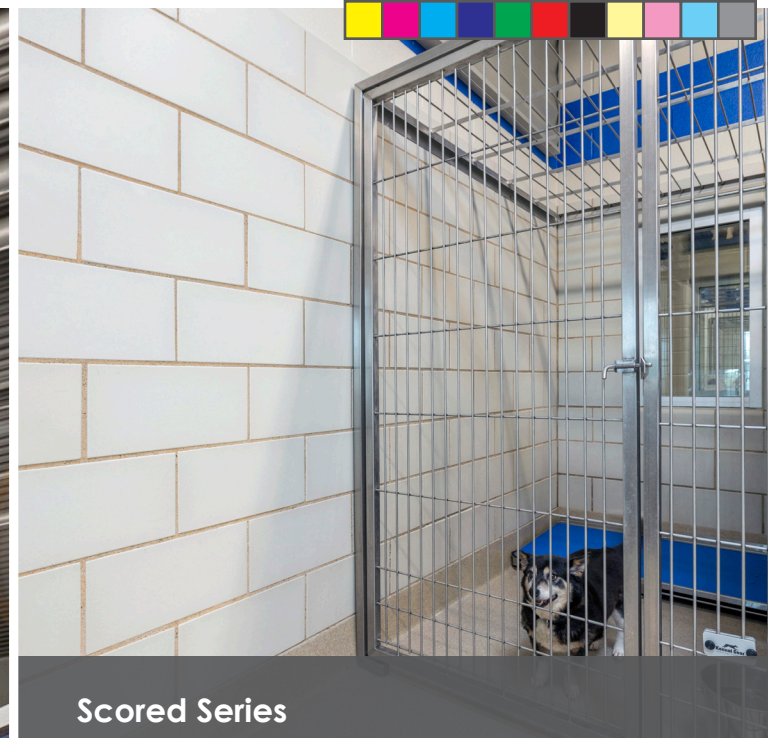
## Performance

- Permanent, integral bond between facing and block.
- Superior abrasion resistance.
- Resistance to crazing and cracking; will not shatter.
- Color-fast for interior use. Good resistance to exterior exposure when installed properly.
- Highly resistant to most chemicals, urine, blood and steam.
- Compliance with stringent safety requirements for flame-spread, smoke density and toxicity.
- Fire ratings of the concrete block: 1 to 4 hours.
- Large cores permit use of granular fill or inserts to increase fire resistance and/or insulation values.

## Savings

- Through-wall units eliminate expense of back-up wall; build and finish in one operation with one trade.
- Accurate face dimensions speed installation.
- Utilities and reinforcing easily installed.
- Surface mounted cove base eliminates floor recess.
- Double-faced units available.
- Lower fire insurance rates with concrete masonry.
- The mass of masonry promotes energy and cost efficient temperature control and facilitates passive solar construction.
- Minimum maintenance. Easily cleaned. No refurbishing.
- Prompt response to tight construction schedules.





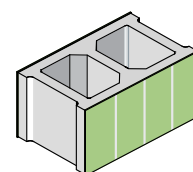
## Scored Series

Unusual patterns and special effects in scale and design achieved by scoring the face during manufacture. Practical and economical.

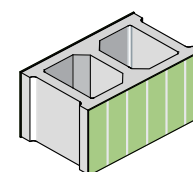
For double-faced scored walls, use 2-wythe construction.

When stack bond appearance is selected, use stack bond construction.

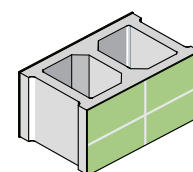
All structural joints should be raked back at least 1/4" and allowed to set. Tuckpoint raked joints and scored joints at the same time. Other scores may be customized to your design.



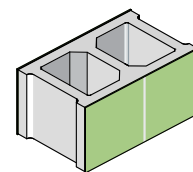
DA7  
4" x 8" VERTICAL



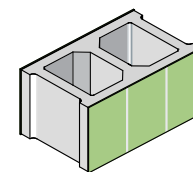
DA9  
6 VERTICAL BRICK



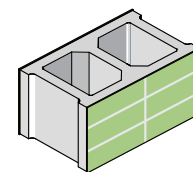
DA2  
4" x 8" VERTICAL



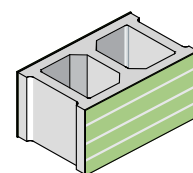
DA1  
8" x 8" SCORE



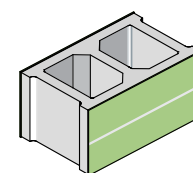
DA5  
5" x 8" SCORE



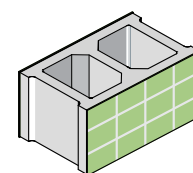
DA3  
BRICK SCORE



DA8  
2" x 16" HORIZONTAL



DA11  
4" x 16"

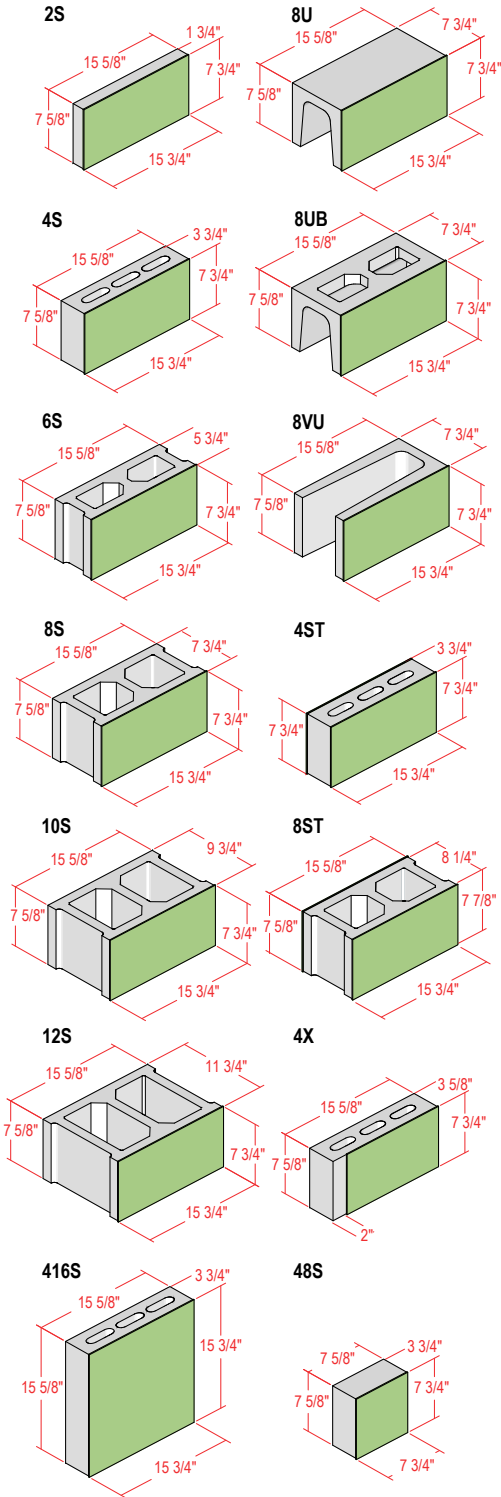


DA12  
4" x 4"

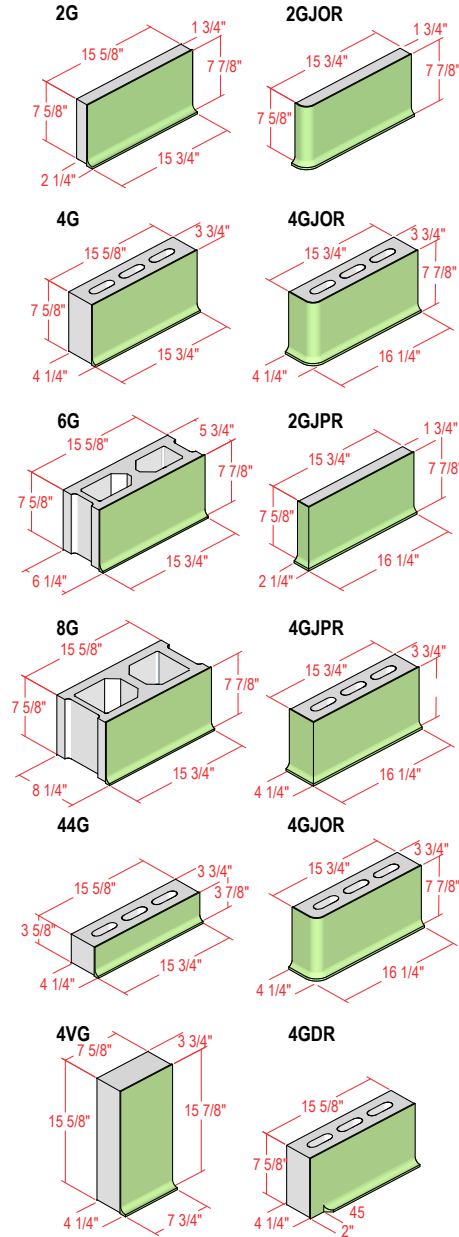


## Standard Shapes & Sizes

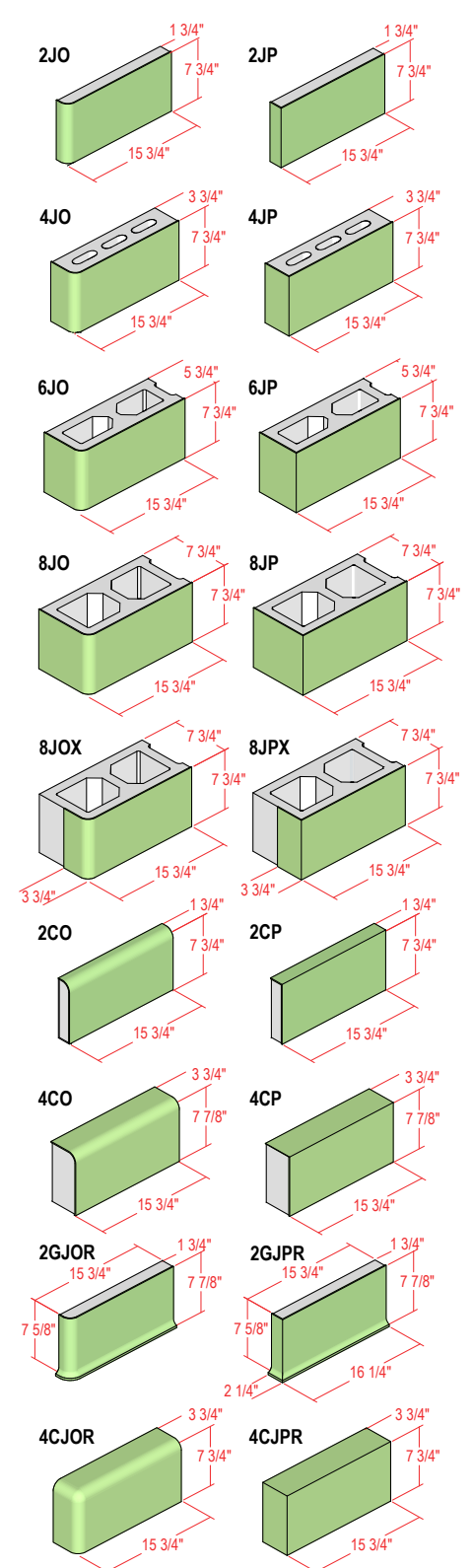
### Field Units



### Cove Base Units



### Jamb & Cap







\* Specify right (R) or left (L). Right shown  
† Consult your nearest representative for more thickness availability.  
Spectra GLAZE®/Soundblox® Series, A/C Acousti-Glaze® Series and other acoustical and insulating systems available. Units supplied will be 2 or 3 score, open or closed end. Available in modular metric sizes. Consult your nearest representative for precise sizes, shapes, block configuration, and face dimensions.





## Spectra GLAZE BIM Content

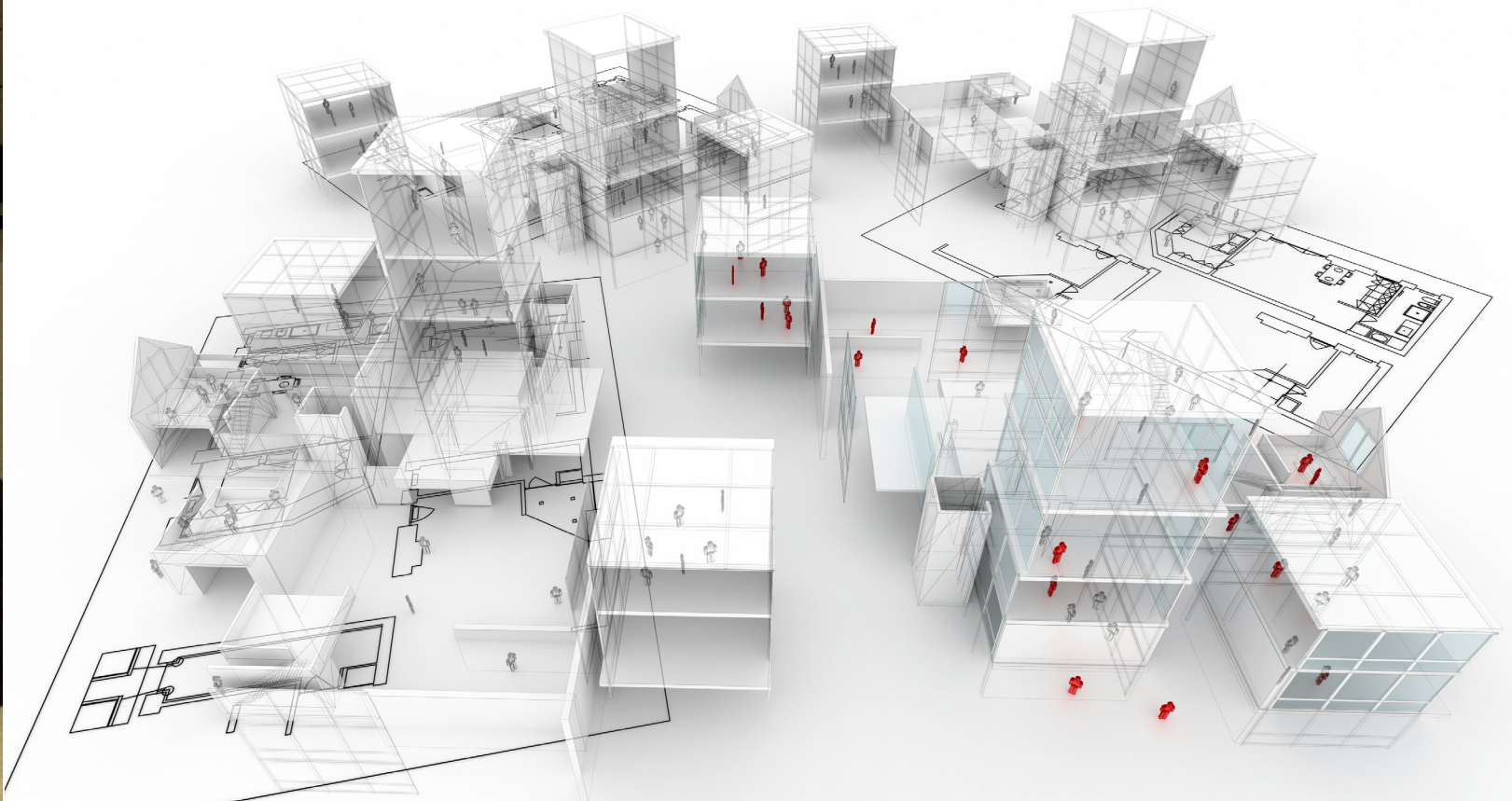
At Spectra GLAZE, we help Architects and Contractors prototype and simulate with accuracy, predictability and ease.

In BIM and Digital Prototyping, accurate 3D model content is king! That is why we make it easy for Architects, Specifiers and Contractors to simulate real-world situations. Spectra Glaze® BIM Content is created with your Design-Caliber and Construction-Caliber models in mind.

The benefits of using Spectra GLAZE BIM:

- Spectra GLAZE colors
- Communicate and simulate
- Accurate product information
- Reduces cycle time
- Accessible and easy to use
- Eliminates errors
- Reduces costly changes

For a full detail of resources and downloadable Spectra GLAZE BIM content please visit: **[Spectraglaze.com](http://Spectraglaze.com)**.







## Standard Colors



S-1  
SPECIAL  
BLACK



S-2  
SPECIAL  
GRAY  
FLANNEL



S-3  
DEEP  
FROST GRAY



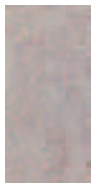
S-4  
LIGHT  
FROST GRAY



S-5\*  
HEATHER



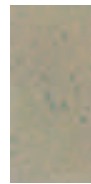
S-6  
CUSTOM  
CLEAR



S-7\*  
CUSTOM  
BUFF



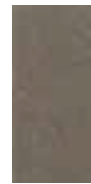
S-8\*  
SAGEBRUSH



S-9  
BUTTER  
SCOTCH



S-10  
LIGHT  
TAMPICO  
GRAY



S-11  
DEEP  
TAMPICO  
GRAY



S-12  
SPECIAL  
BROWN



S-13  
DEEP  
IRIS  
BLUE



S-15  
DEEP  
KINGSTON  
BLUE



S-17  
DEEP  
ASTRA  
BLUE



S-19  
DEEP  
BURMUDA  
BLUE



S-21  
DEEP  
PEACOCK  
GREEN



S-23  
DEEP  
HEMLOCK  
GREEN



S-25  
DEEP  
LEAF  
GREEN



S-27  
DEEP  
OLIVE  
GREEN



S-29  
DEEP  
SPRING  
GREEN



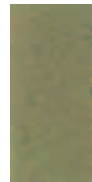
S-31  
DEEP  
TROPIC  
YELLOW



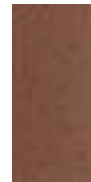
S-33\*  
DEEP  
CAPRI  
YELLOW



S-35  
DEEP  
HONEY



S-37  
DEEP  
DESERT  
YELLOW



S-39  
DEEP  
MUSHROOM  
BROWN



S-41  
DEEP  
CINNAMON



S-43  
DEEP  
PUMPKIN



S-45  
DEEP  
SWEDISH  
RED



S-47  
DEEP  
SIERRA  
RED



S-14  
LIGHT  
IRIS  
BLUE



S-16  
LIGHT  
KINGSTON  
BLUE



S-18  
LIGHT  
ASTRA  
BLUE



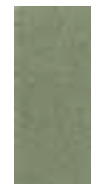
S-20  
LIGHT  
BERMUDA  
BLUE



S-22  
LIGHT  
PEACOCK  
GREEN



S-24  
LIGHT  
HEMLOCK  
GREEN



S-26  
LIGHT  
LEAF  
GREEN



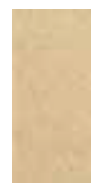
S-28  
LIGHT  
OLIVE  
GREEN



S-30  
LIGHT  
SPRING  
GREEN



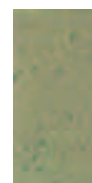
S-32  
LIGHT  
TROPIC  
YELLOW



S-34\*  
LIGHT  
CAPRI  
YELLOW



S-36  
LIGHT  
HONEY



S-38  
LIGHT  
DESERT  
YELLOW



S-40  
LIGHT  
MUSHROOM  
BROWN



S-42  
LIGHT  
CINNAMON



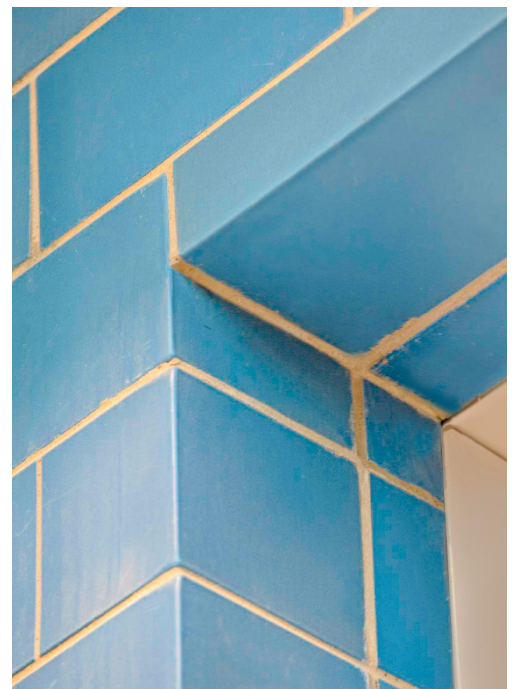
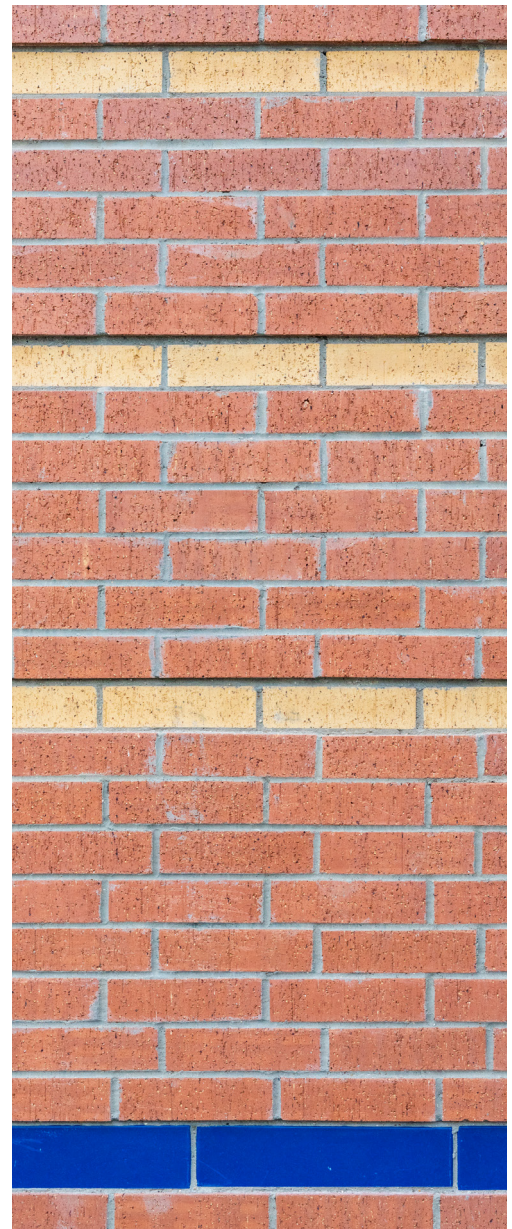
S-44  
LIGHT  
PUMPKIN



S-46  
LIGHT  
SWEDISH  
RED



S-48  
LIGHT  
SIERRA  
RED







## Vari-Tone® Series

Varegated earthtones perfect for exterior use.

V-101* BEIGE DE™	V-102* BEIGE AE™	V-103* BEIGE CE™	V-104* BEIGE E™	V-105* IVORY BE	V-106* PEBBLE BE	V-107 SAND- STONE BE	V-108 TERRACOTTA BE
V-109 RUSSET AD	V-110 COPPER- STONE BC	V-111 MOCHA BE	V-112 WALNUT BC	V-113 UMBER AC	V-114 GRAY BE	V-115 FLINT AC	V-116 CHARCOAL A

A sound economic alternative with the appearance of natural materials, including granite, stone and marble.



## Designer Color Series The Signature Collection

D-201 SEAFOAM GREEN	D-202 MIST GREEN	D-203 APPLE GREEN	D-204 CHAMPAGNE BEIGE	D-205 PEARL GRAY	D-206 POWDER BLUE	D-207 MUTED MAUVE	D-208 ROSE PINK	D-209 EVERGREEN
D-210 GRASS GREEN	D-211 MIDNIGHT BLUE	D-212 PACIFIC BLUE	D-213 PLUM	D-214 RED ONE	D-215 BRITE ORANGE	D-216 SUNSHINE YELLOW	D-217 HOT ROSE	D-218 CONCORD PURPLE

NOTE: The colors in this brochure and in color chip kits are for preliminary selection only. Request full size sample to see actual color selection. Specify and erect a sample panel at least 4' x 4' at job site to show typical variation, range, and approval for each color, type, and size of block selected.

Natural and organic pigments incur natural change on the exterior, some more than others. Standard colors have been tested via 12 month exterior evaluations in Florida by the South Florida Test Service, Inc. and under ASTM C-744 for 500 hours of weatherometer. All colors are colorfast for interior use. The best colors for exterior have an asterisk(\*) and are whites and pastels. Consult local manufacturer for field experience in your area and test data. Follow proper masonry industry recommended design and installation. Specify Spectra GLAZE units for block and mortar and use as intended in weatherlight and breathable wall designs for durable long-lasting masonry. Where appropriate, specify water based epoxy grout for pointing exterior joints and joints in sanitary and food applications.

All colors are light stable for interior use. Some florescent light gives off ultra-violet rays which may cause a slight color shift, even in light stable pigments, after many years of exposure. Contact your local manufacturer for data on exterior field performance.







For a full detail of resources and  
downloadable Spectra GLAZE BIM  
content please visit: **Spectraglaze.com**.

For more information or to request samples,  
please contact us at:



800-368-1024



info@spectraglaze.com

