

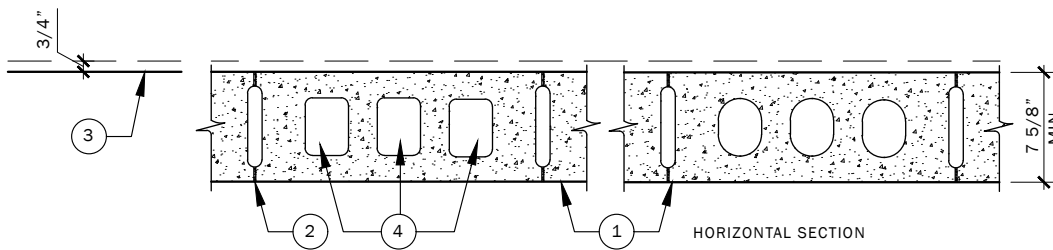


UL FIRE RATED

Design No. U904

Bearing Wall Rating - 3 HR.

Nonbearing Wall Rating - 3 HR.



1. **Concrete Blocks*** - Various designs. Classification C-3 (3 hr).
2. **Mortar** - Blocks laid in full bed of mortar, nom. 3/8 in. thick, of not less than 2-1/4 and not more than 3-1/2 parts of clean sharp sand to 1 part Portland cement (proportioned by volume) and not more than 50 percent hydrated lime (by cement volume). Vertical joints staggered.
3. **Portland Cement Stucco or Gypsum Plaster** - If used, add 1/2 hr. to Classification. Attached to concrete blocks (Item 1)
4. **Loose Masonry Fill** - If all core spaces are filled with loose dry expanded slag, expanded clay or shale (rotary kiln process), water repellent vermiculite masonry fill insulation, or silicone treated perlite loose fill insulation add 1 hr to Classification.
5. **Foamed Plastic*** - (Optional - not shown) 1-1/2 in thick max, 4 ft wide sheathing attached to concrete blocks (Item 1).
Celotex Corp. - Type Thermax

***Bearing the UL Classification Marking**