

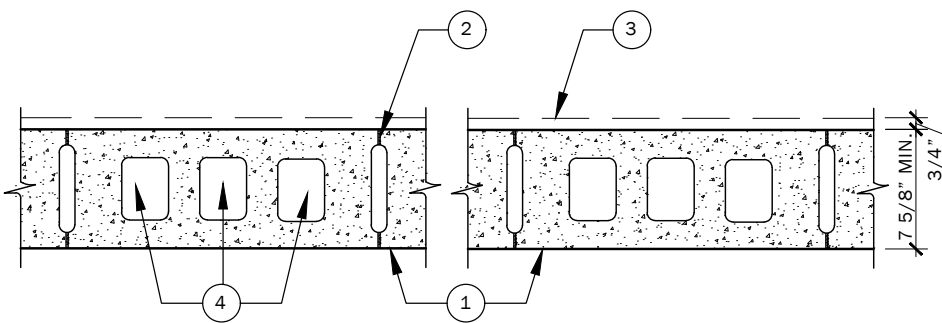


UL FIRE RATED

Design No. U901

Bearing Wall Rating - 4 HR.

Nonbearing Wall Rating - 4 HR.



1. **Concrete Blocks*** - Various designs. Classification B-4 (4 hr).

2. **Mortar** - Blocks laid in full bed of mortar, nom. 3/8 in. thick, of not less than 2-1/4 and not more than 3-1/2 parts of clean sharp sand to 1 part Portland cement (proportioned by volume) and not more than 50 percent hydrated lime (by cement volume). Vertical joints staggered.

3. **Portland Cement Stucco or Gypsum Plaster** - If used, add 1/2 hr. to Classification.

4. **Loose Masonry Fill** - If all core spaces are filled with loose dry expanded slag, burned clay or shale (rotary kiln process), water repellent vermiculite masonry fill insulation, or silicone treated perlite loose fill insulation, Class D-2 (2 hr) or C-3 (3 hr) concrete blocks will provide a 4 hr fire resistance rating.

***Bearing the UL Classification Marking**